



# WALL PLAZA

LIMIT  
LESS  
OPPO  
RTUN  
ITIES

LIMIT  
LESS  
OPPO  
RTUN  
ITIES

The

MIXED-USE BUSINESS DISTRICT IN THE WEST SIDE OF CAIRO



DESIGNED FOR

# Visionary Minds



LIMIT  
LESS  
OPPO  
RTUN  
ITIES



ABOUT The PROJECT

We started with the idea of creating a role-model district that seamlessly mingles arts and modernity, while connecting the various moods of the community persona during the journey through the day.

VAL Plaza is devised for the unrivalled elite. A top-notch administrative, commercial and wellness center project for those who appreciate the smart-modern luxury in business and life

# The INSPIRATION

AS ACCURATELY DESCRIBED IN ANCIENT LATIN; THE BLEND OF ART, BEAUTY AND POWER "VAL".

IN A VERY PREMIUM LOCATION IN THE WEST SIDE OF CAIRO, VAL PLAZA IS LOCATED WITH A HIGH PROXIMITY TO EVERYTHING THAT MATTERS.

VAL PLAZA. HOMOGENEOUSLY ENTWINING LEISURE, SUCCESS AND WELLNESS IN AN ARTISTIC METICULOUS CANVAS TO PORTRAY THE PERFECT PICTURE IN THE DISTRICT, INSPIRED BY THE ANCIENT BEAUTY IN A FUTURISTIC, AND MODERN ESTATE.



INSPIRATION



## The LOCATION

In the busy destination of west of Cairo, VAL Plaza is nestled at the heart of one of the city boasting a new kind of mixed-use project with its proximity to the main landmarks and arteries of the city.

1 min

26th of July Corridor

5 min

Waslet Dahshour

5 min

Wahat Road

5 min

Wadi Degla Club

15 min

Mall of Egypt

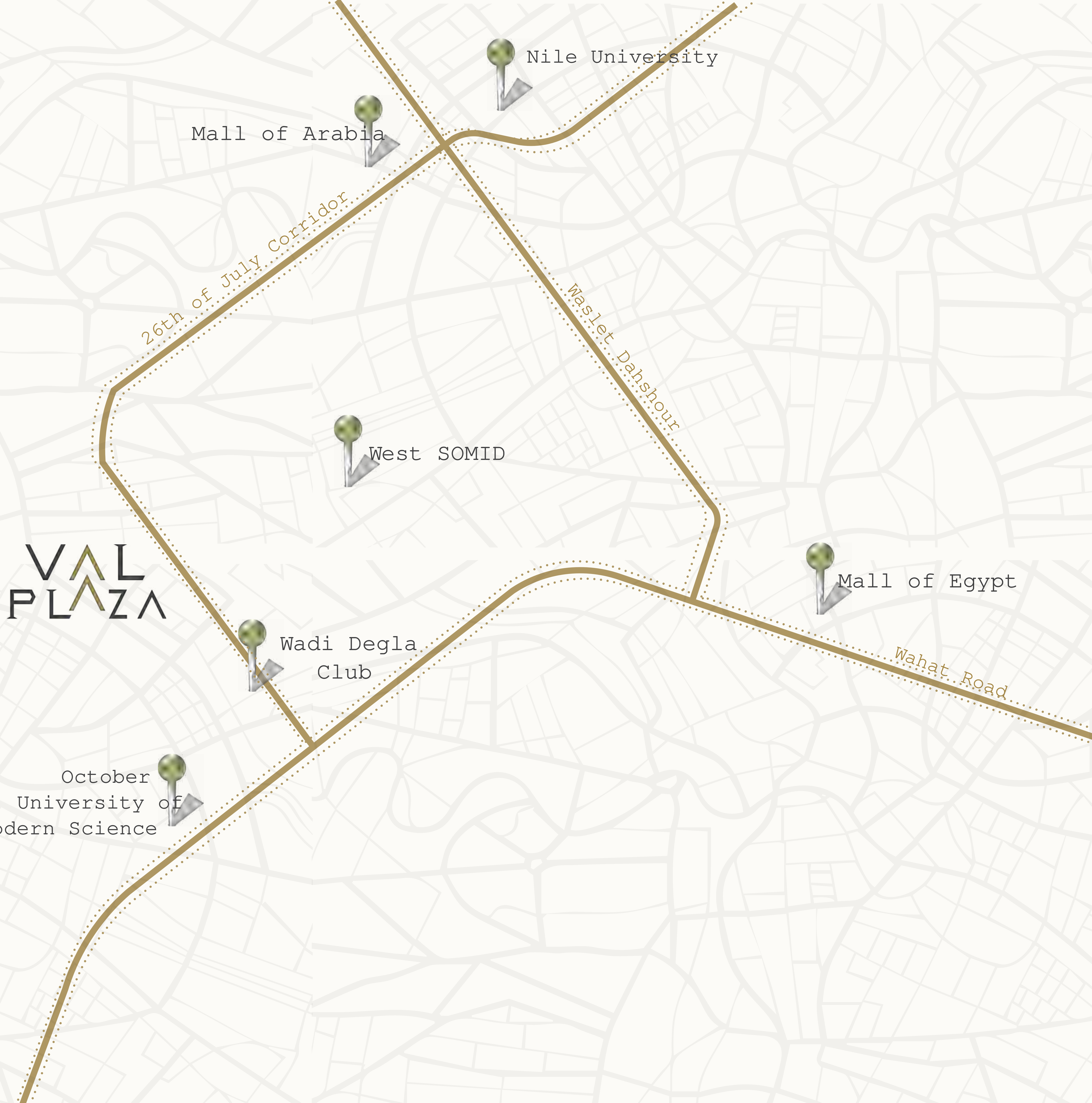
15 min

Mall of Arabia

10 min

October Modern Science University





Nile University

Mall of Arabia

26th of July Corridor

Waslet Dahshour

West SOMID

VAL  
PLAZA

Wadi Degla  
Club

October  
University of  
Modern Science

Mall of Egypt

Wahat Road

# The MASTERPLAN

The V-shape connected buildings that masterplans VAL Plaza, offer a panoramic scenery from any spot to have a 360 view at a skimming glance.

The project boasts the retail, dining plaza with generous landscape of greenery and water features that incept the right ambience at all times. The Plaza is surrounded by modern, futuristic style buildings with glass facades mirroring the artistic portrait of the Plaza



MASTER PLAN

CONTEMPORARY | INTERNATIONAL TRENDY



## The EXPERIENCE

VAL Plaza seamlessly integrates the various experiences in its products of administrative offices, shops, wellness clinics, dining restaurants in one environment designed for contemporary community.

— PRODUCT-MIX

MODERN

FUTURISTIC

VISIONARY



HOME OF

# Sharp Minds

Administrative office-spaces at VAL Plaza have been designed to accommodate a wide range of company needs, enabling a mix of small businesses and huge enterprises to coexist in the same cutting-edge commercial environment. During the design & planning phase, we took into account every business requirement, comprehending the corporate and ergonomic requirements of today's workers, and included their findings in the finished product. The end effect is absolutely remarkable: an office environment that enhances productivity, increases employee satisfaction, and provides businesses and clients with the ultimate in comfort.

AGILE BUSINESS

BUSINESS

BUSINESS

CREATING



BUSINESS | OFFICES



BUSINESS | OFFICES



FACILITIES  
AMENITIES

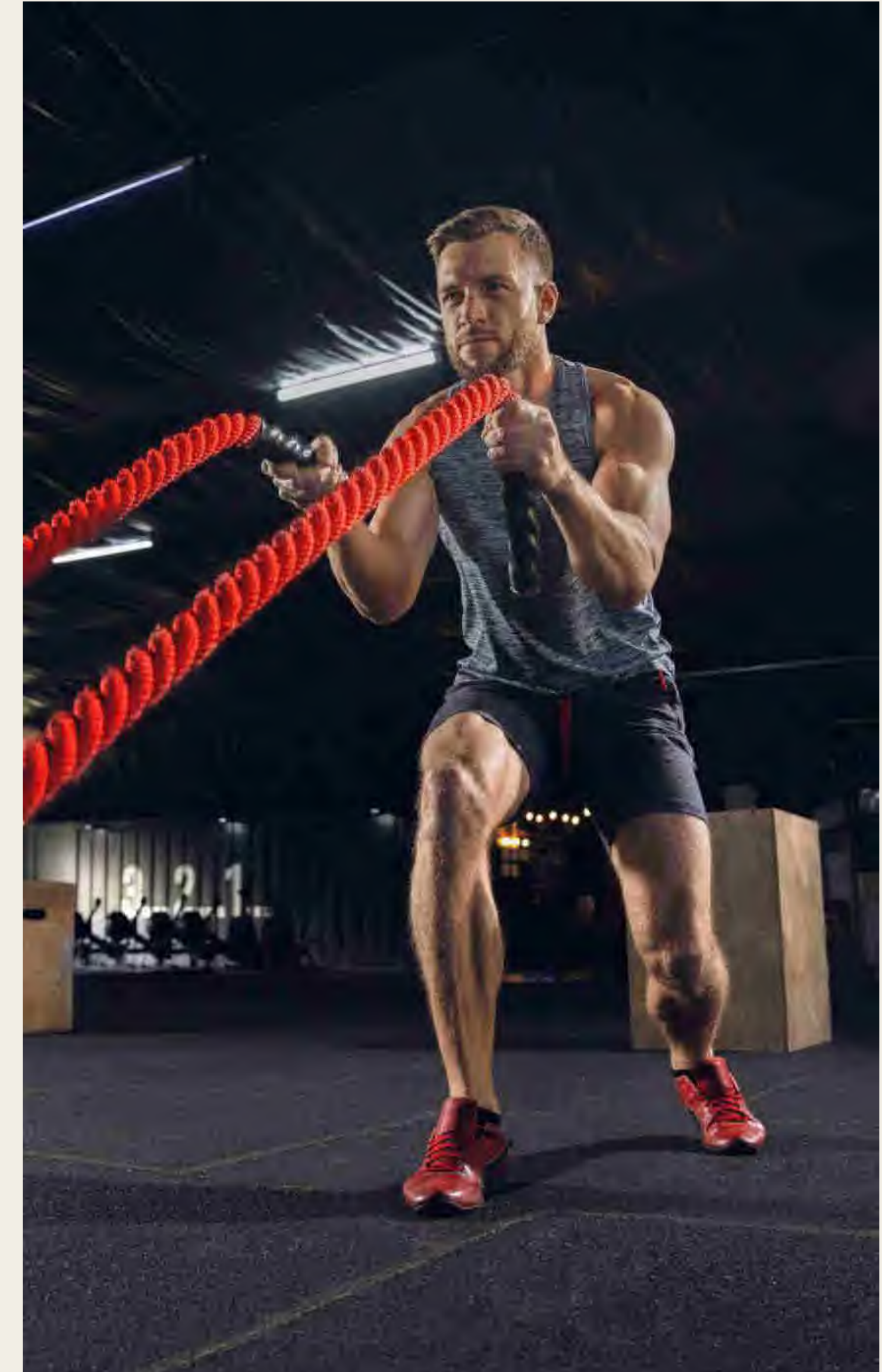




# The CORRIDORS

# Wellness Center

The wellbeing of the community begins with its members wellness. VAL Plaza Wellness center offers a 360 wellbeing facility for body and soul, featuring; medical care, cosmo-therapy, and fitness center, all managed and operated by highly perceived brands in their fields.



**BODY & SOUL WELLNESS**





Clinic



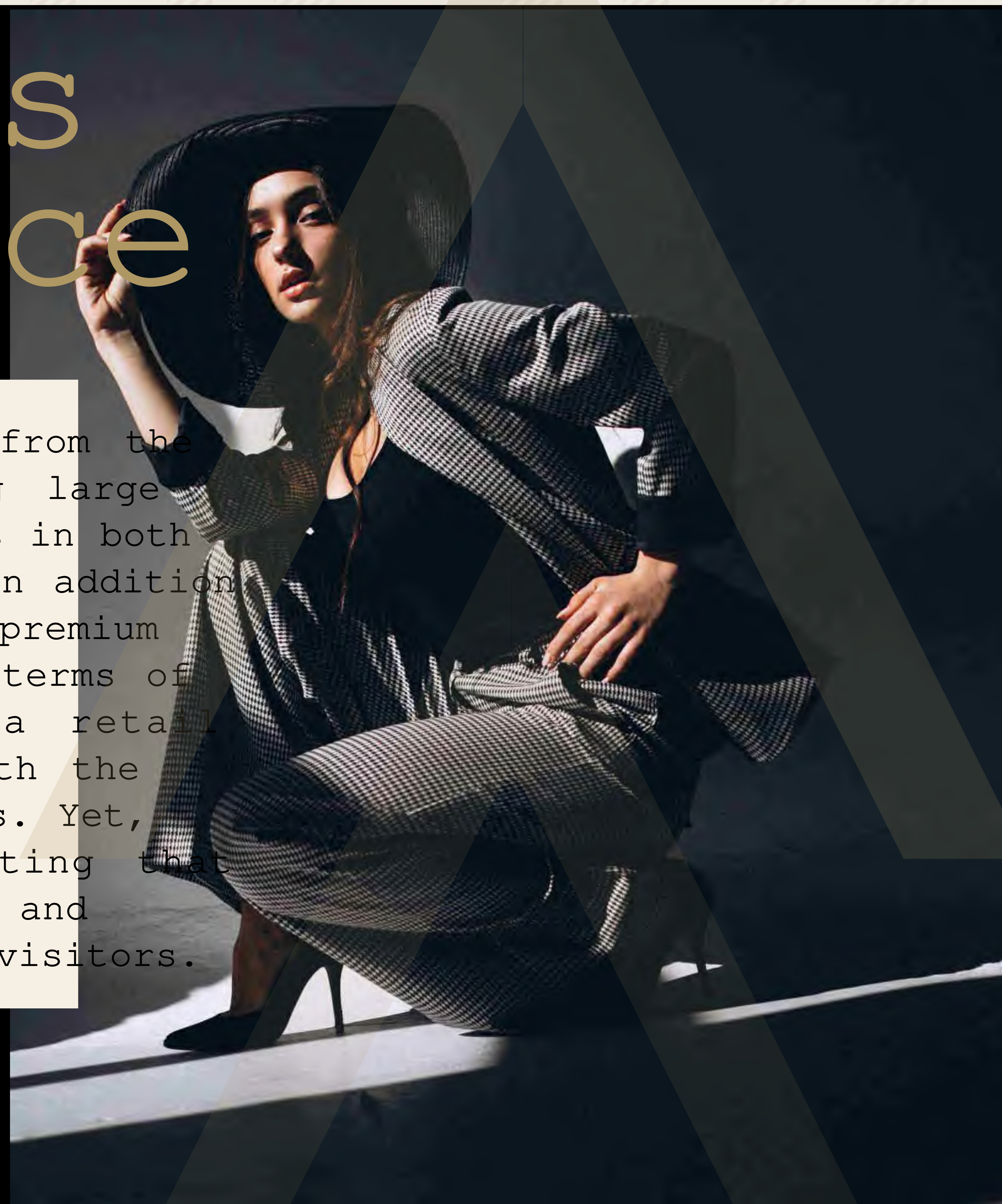


WELLNESS | CLINICS

# Marvelous Experience

At VAL Plaza you will benefit from the best mix of tenants, combining large corporate offices with top brands in both the retail and eating sectors, in addition to having world-class design, a premium location, and every amenity. In terms of variety, VAL Plaza will be a retail destination that can compete with the best malls and shopping complexes. Yet, it will be located in a setting that combines indoor and outdoor space and is wonderfully accessible to all visitors.

**EXCLUSIVE SHOPPING**



TRENDY

INTERNATIONAL

CONTEMPORARY



EXCLUSIVE | SHOPPING

MODERN

TASTEFUL

TRENDY

# Unwinding Experience

A wide assortment of food and beverage alternatives, including both fine and casual dining restaurants and cafes, giving residents and guests plenty of options that are all housed in the same destination.



EXQUISITE DINING

TASTEFUL

TRENDY

TRENDY  
TASTEFUL





EXCQUISITE | DINING



EXCQUISITE | DINING

FULLY EQUIPPED MEETING ROOMS

| AC - VRS SYSTEMS

| UNDERGROUND PARKING

# Facilities & Amenities

An array of exceptional amenities are homogeneously fitted in VAL PLaza to facilitate your everyday operation and offer the luxury of peace of mind to our tenants as well as their valuable guests and customers.

PEACE OF MIND



FULLY EQUIPPED MEETING ROOMS

LUXURY BUSINESS LOUNGE

WELLNESS CENTER



LUXURY BUSINESS LOUNGE



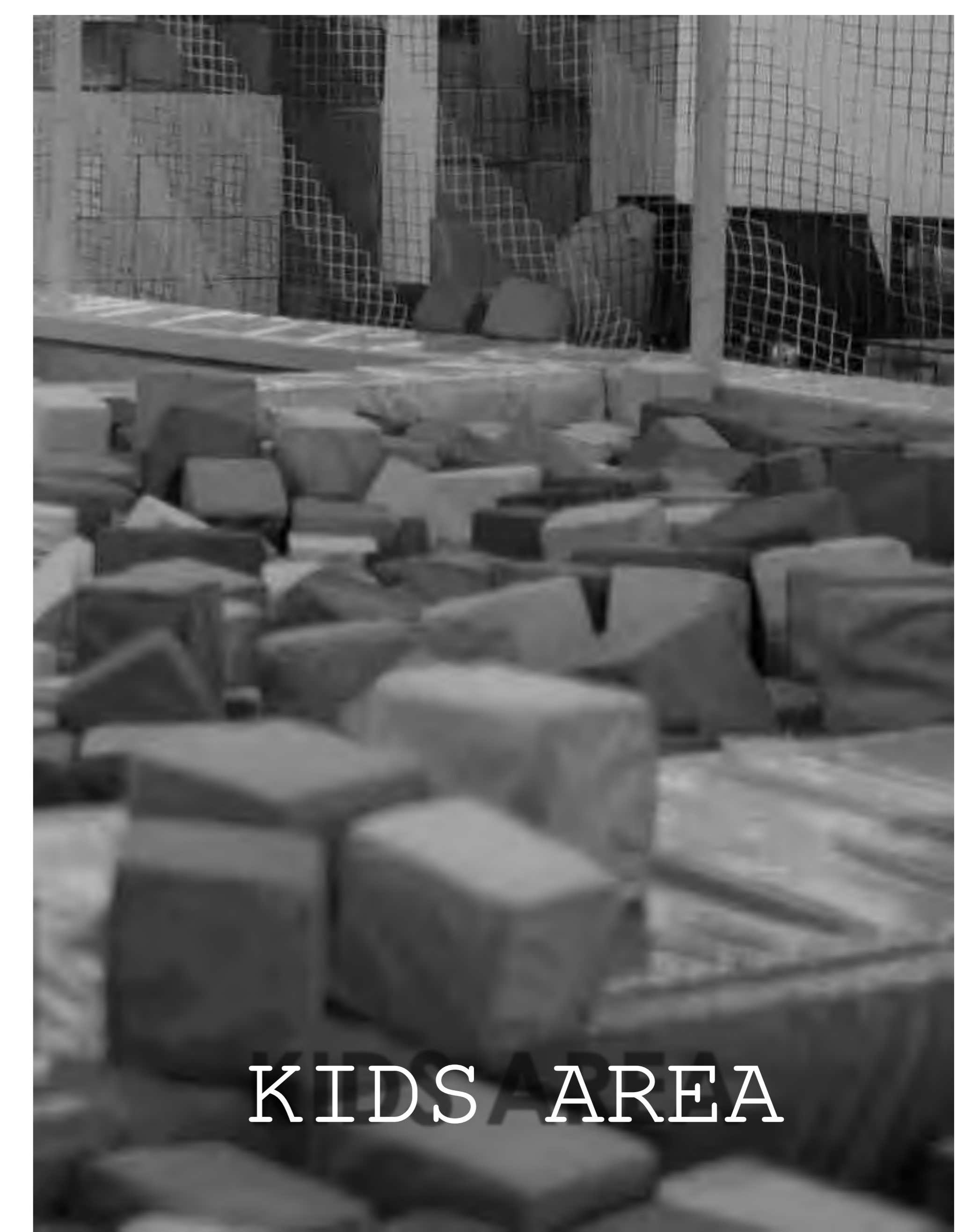
SPA



SECURITY 24/7



EQUIPPED MEETING ROOMS



KIDS AREA

SECURITY 24/7

EQUIPPED MEETING ROOMS

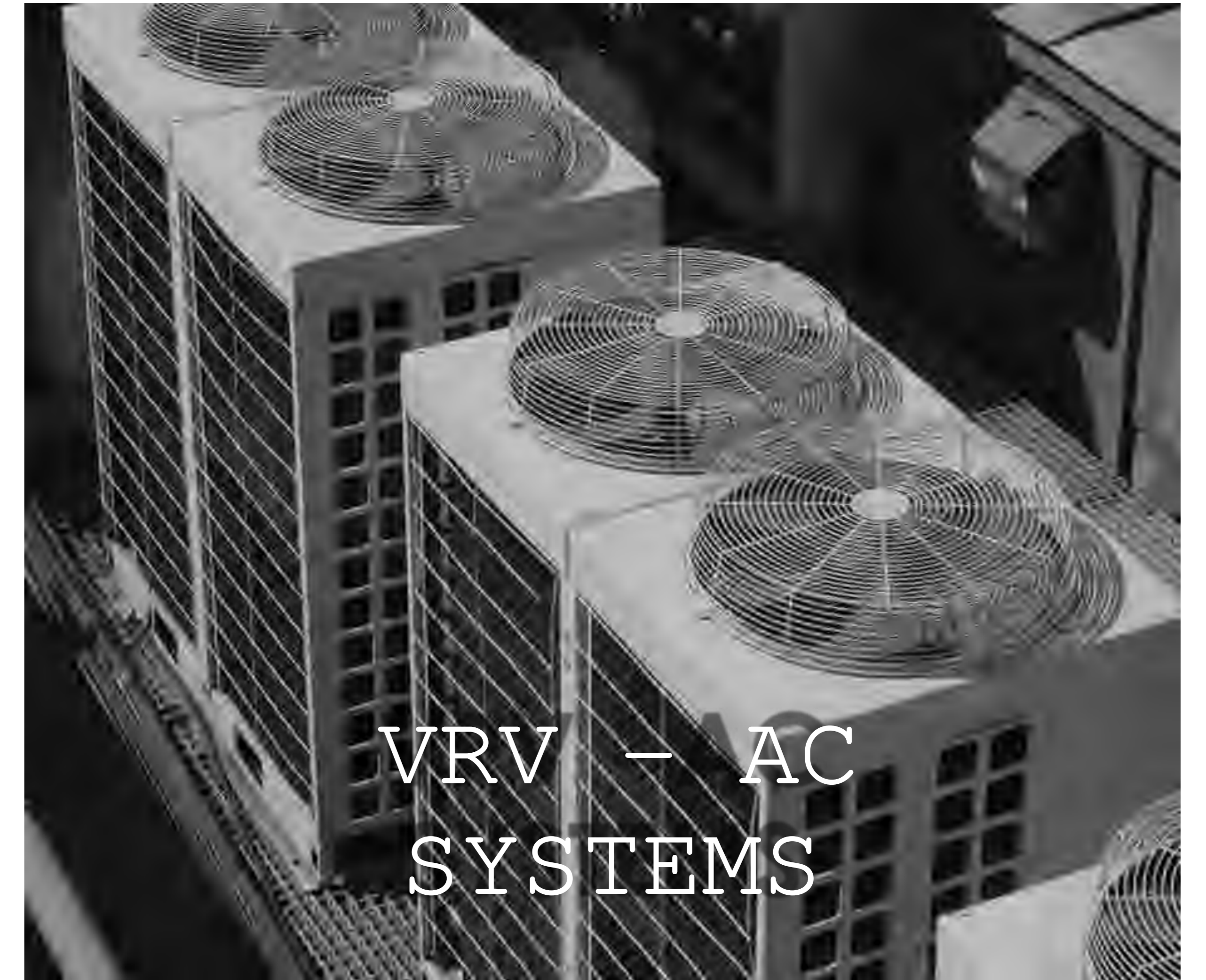
KIDS AREA



HIGH SPEED ELEVATORS



FIRE FIGHTING SYSTEMS



VRV - AC SYSTEMS



ROBUST INFRASTRUCTURE



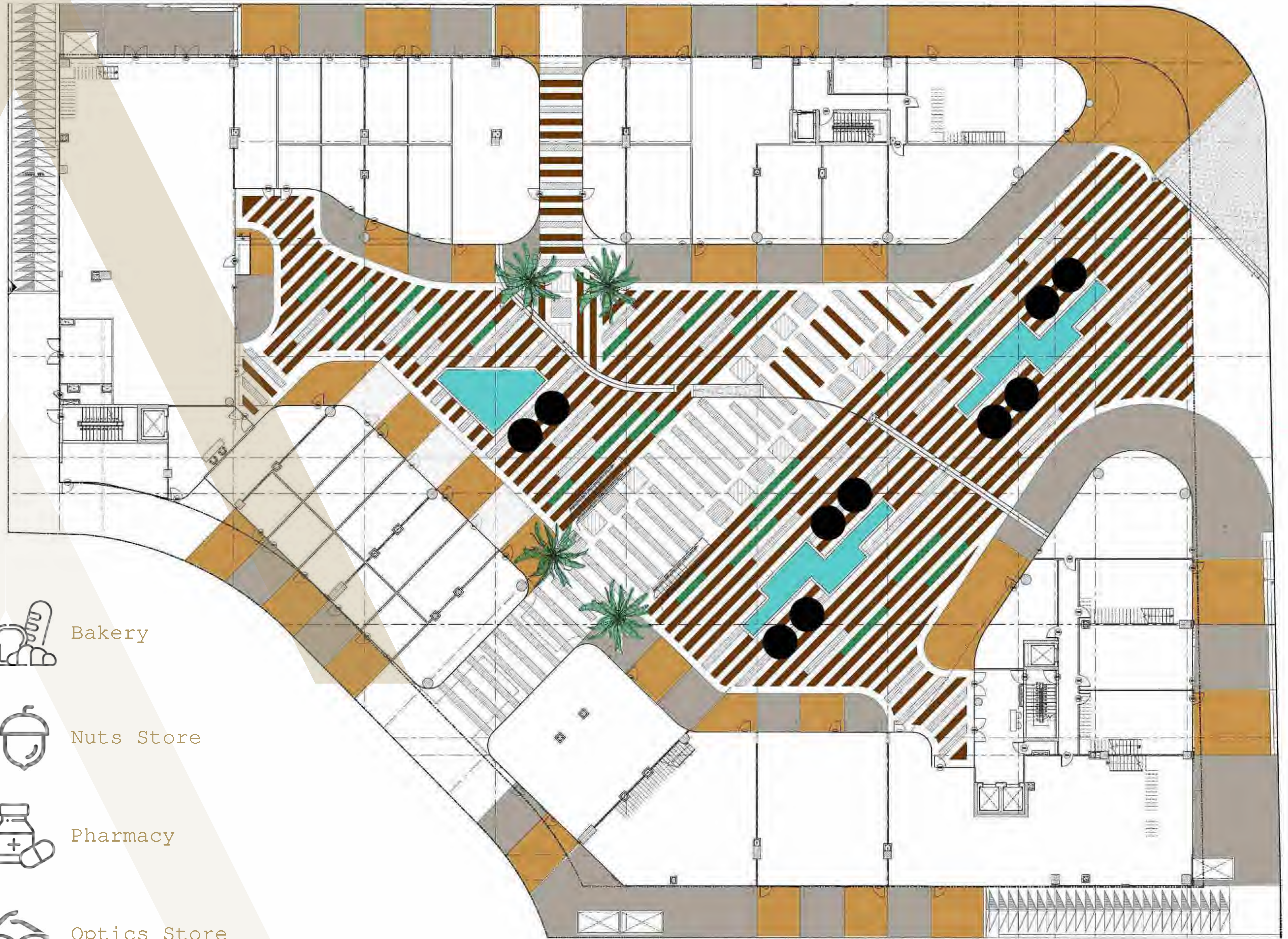
FACILITIES AMENITIES &



# Floor Plans



# GROUND FLOOR



Supermarket



Bakery



Bank



Nuts Store



Restaurants



Pharmacy



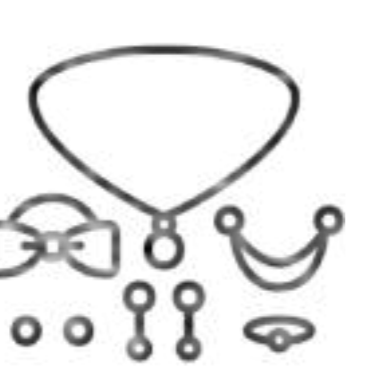
Gym



Optics Store



Chocolate Store



Accessories

# FIRST FLOOR



Kids area



Gifts Shop



Gym



Sportswear



Restaurants



Spa



F&B



Fashion



Jewelry



Watches



Makeup &  
Hairdresser



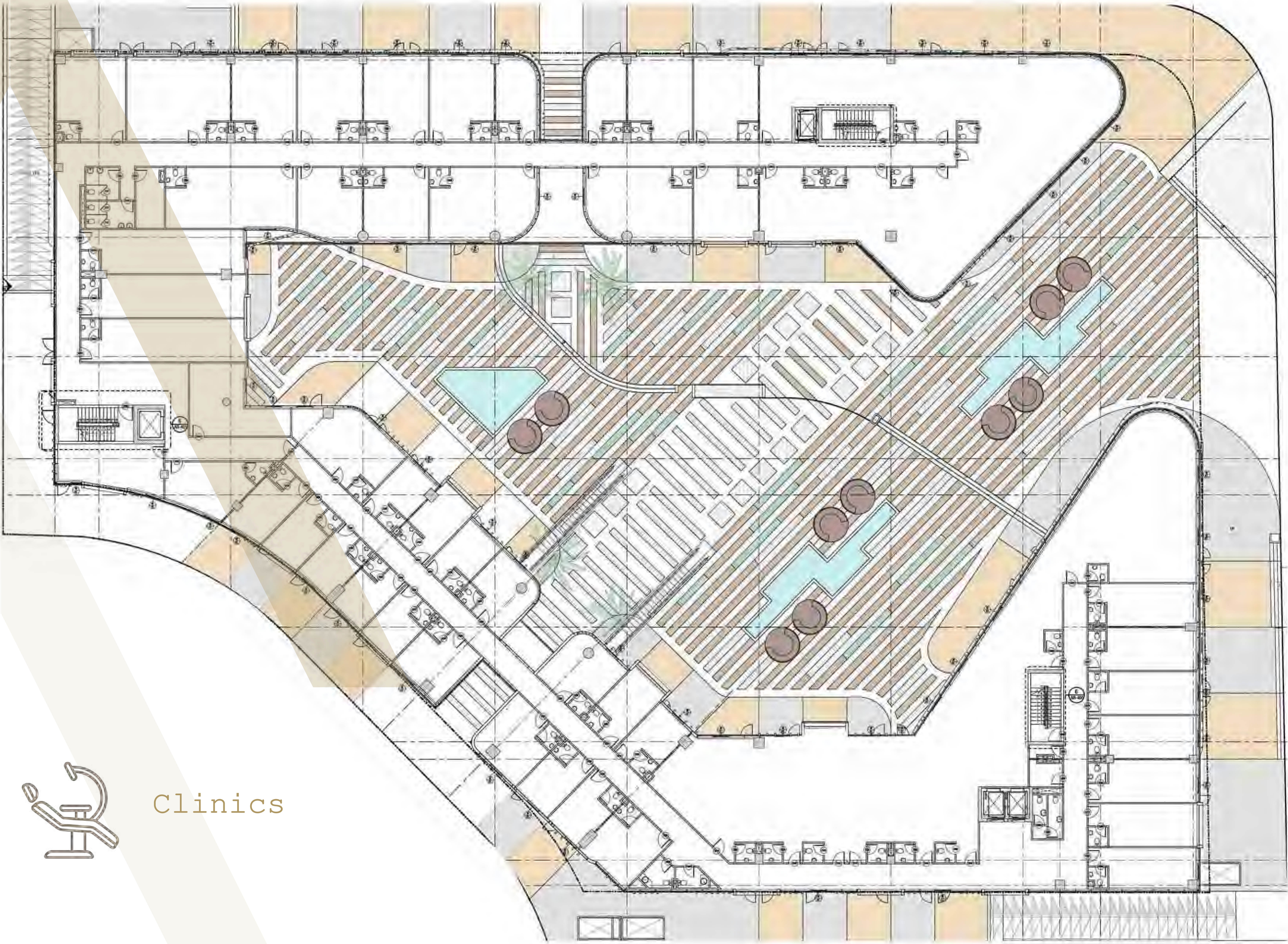
Computer Shop



Stationery



# SECOND FLOOR



Offices



Clinics

A high-angle photograph of a person walking on a tiled floor. The floor is composed of large, light-colored square tiles with dark grout lines. A large, semi-transparent yellow arrow graphic points from the top right towards the person. The person is walking away from the camera, towards the right side of the frame. A black rectangular box is overlaid on the left side of the image, containing the text 'The JOURNEY BEGINS' in a gold-colored serif font.

The  
JOURNEY  
BEGINS





EXCLUSIVE | SHOPPING



VAL  
PLAZA

POKA

SOLO

MARGY

KONA



KONA

hopo

QWEN

MOON GYUT

hopo

QWEN

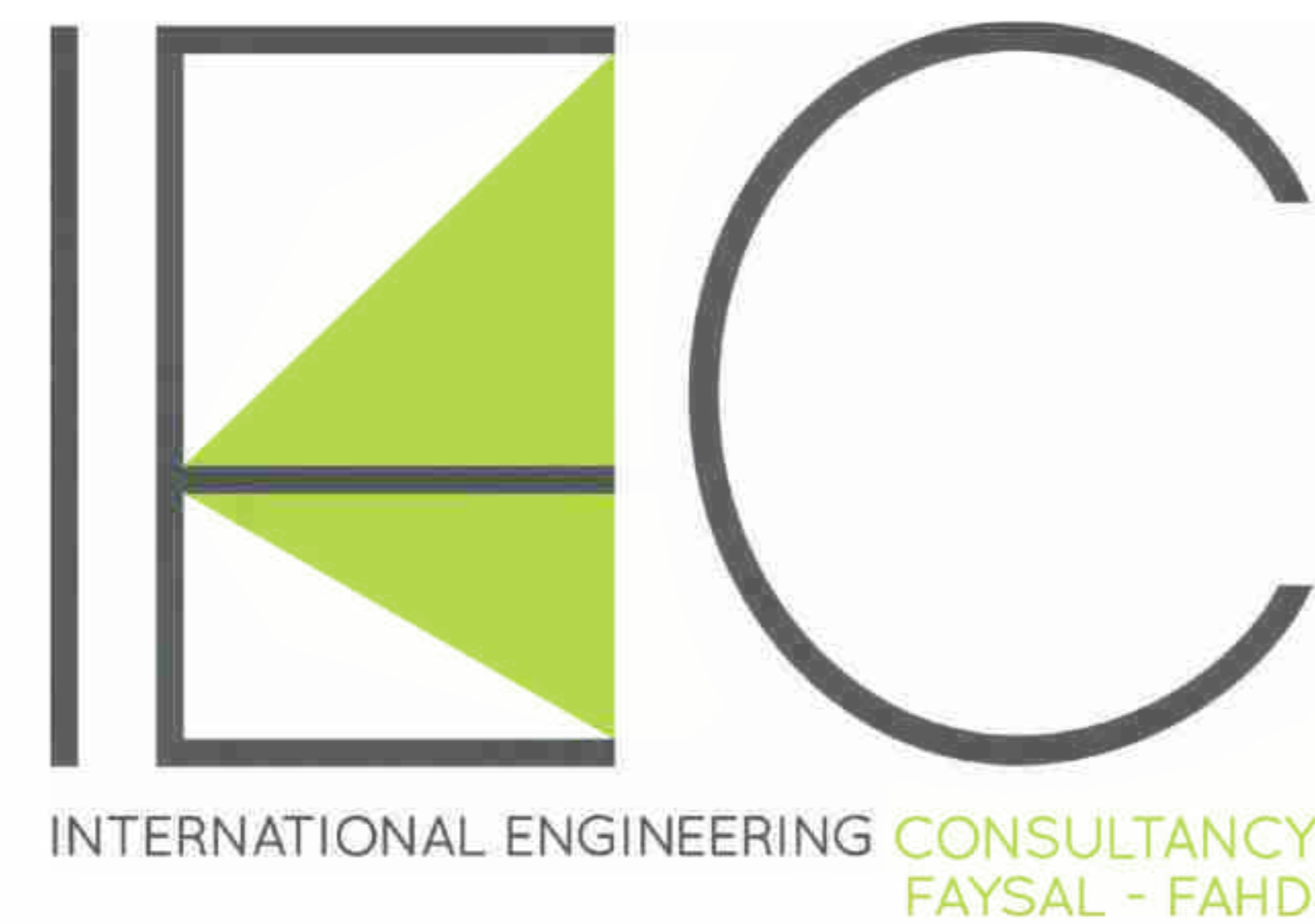
QWEN

hopo

QWEN

QWEN

Our  
PARTNERS OF SUCCESS



## CONTACT US



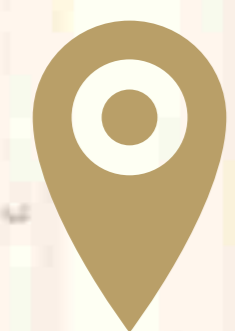
15256



Info@javaddevelopments.com



Javaddevelopments.com



Arkan Plaza, F3-2B4 Elshiekh Zayed- Giza, Egypt

